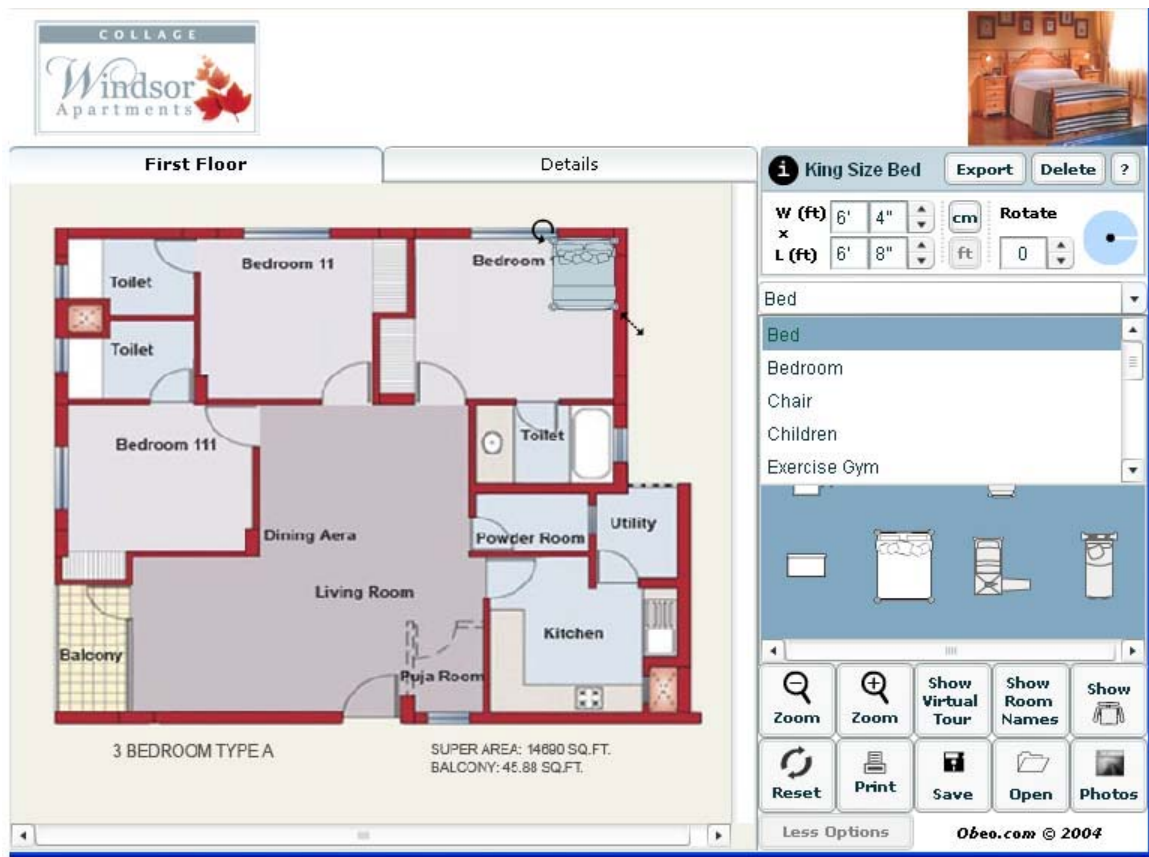


Instructions to use Space Designer



In the Space Designer, you will see the floor plan of an apartment where a user can drag and drop the furniture to design its own interior. To select and place the furniture in the floor plan, following steps needs to be followed:-

- Select the type of furniture from the drop down box where the default displayed text is “Bed”. Choose the furniture, hold left click of the mouse and drag the chosen furniture on the floor plan.
- To readjust the position of furniture, hold left click and rotate the furniture by dragging circular arrow.
- Furniture can be resizable either by setting the width and length of furniture, given in the table above the drop down button of furniture or by holding left click of the mouse and dragging the line arrow.